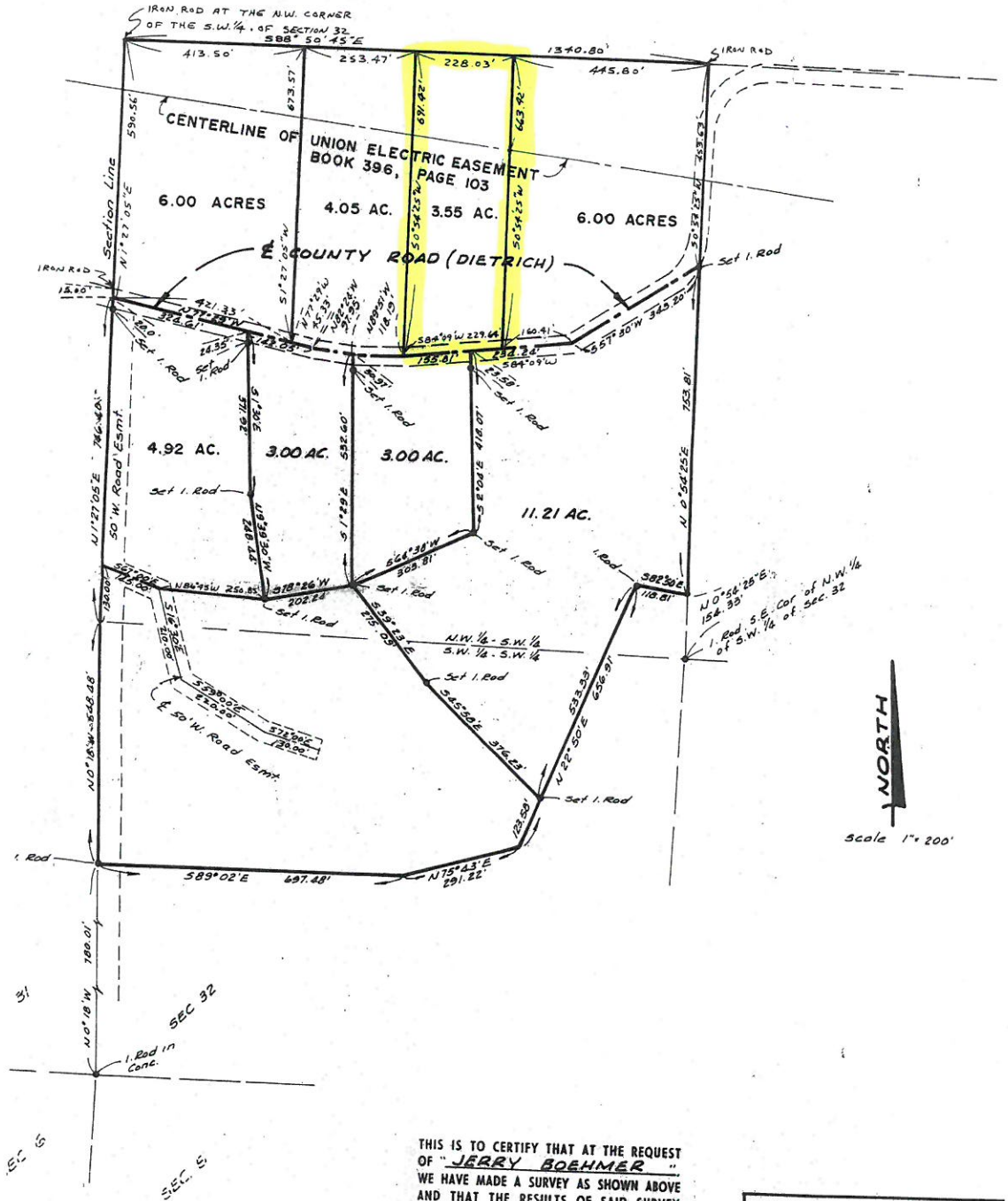


PART OF S.W. 1/4 OF SECTION 32  
 TWP 48N.R 1E  
 ST. CHARLES CO., MO.



THIS IS TO CERTIFY THAT AT THE REQUEST OF "JERRY BOEHMER" WE HAVE MADE A SURVEY AS SHOWN ABOVE AND THAT THE RESULTS OF SAID SURVEY ARE CORRECTLY REPRESENTED UPON THIS PLAT.  
*Robert L. Lewis*  
 ROBERT L. LEWIS  
 WARREN COUNTY SURVEYOR  
 L.S. NO. 1004

LEWIS AND ASSOCIAT		
101 EAST WALTON		
WARRENTON, MISSOURI 6		
TITLE		
SCALE 1" = 200'	DR. BY Les	DRAWN
DATE 8-28-76	CK'D. BY	