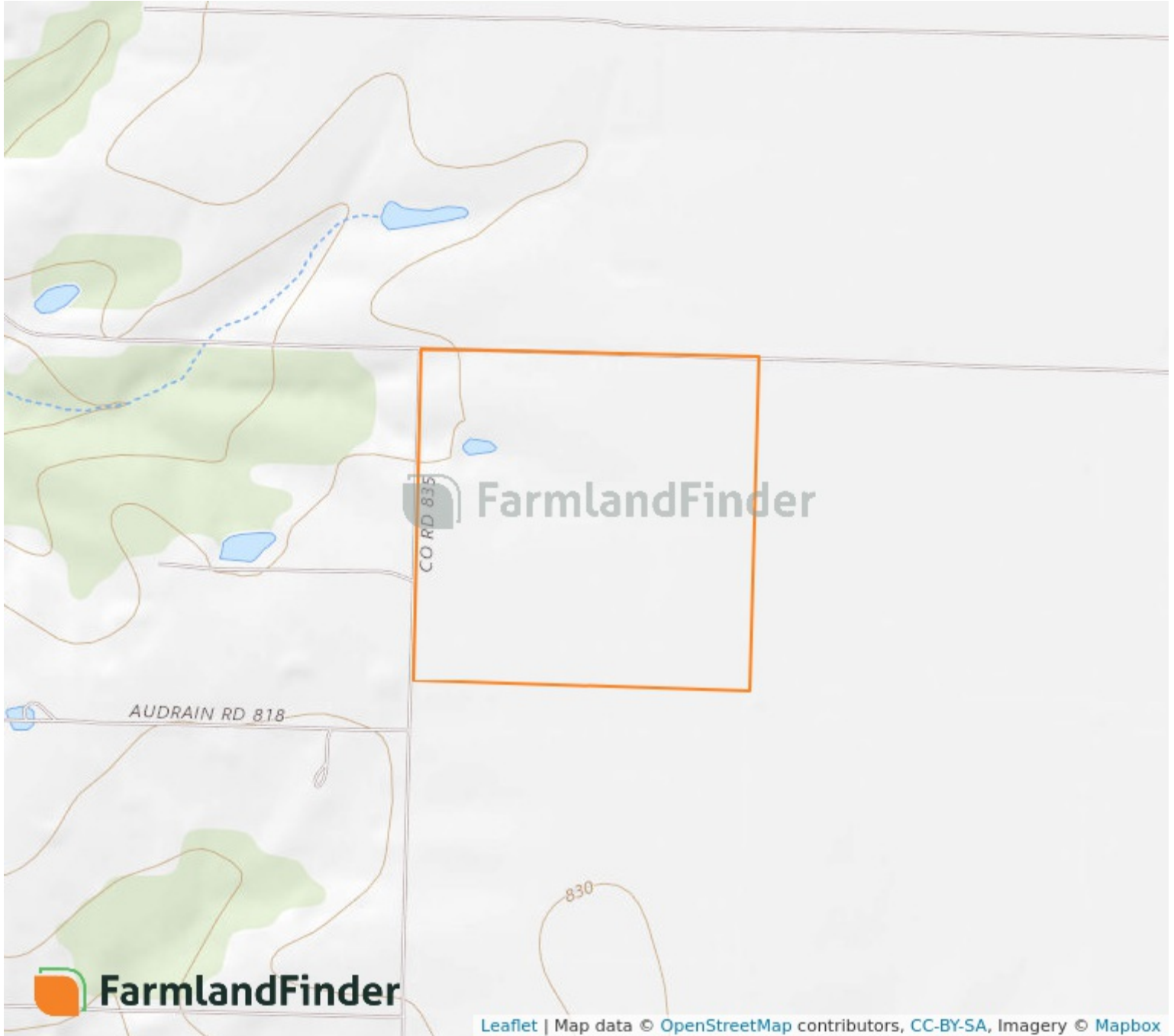


## Aerial Map



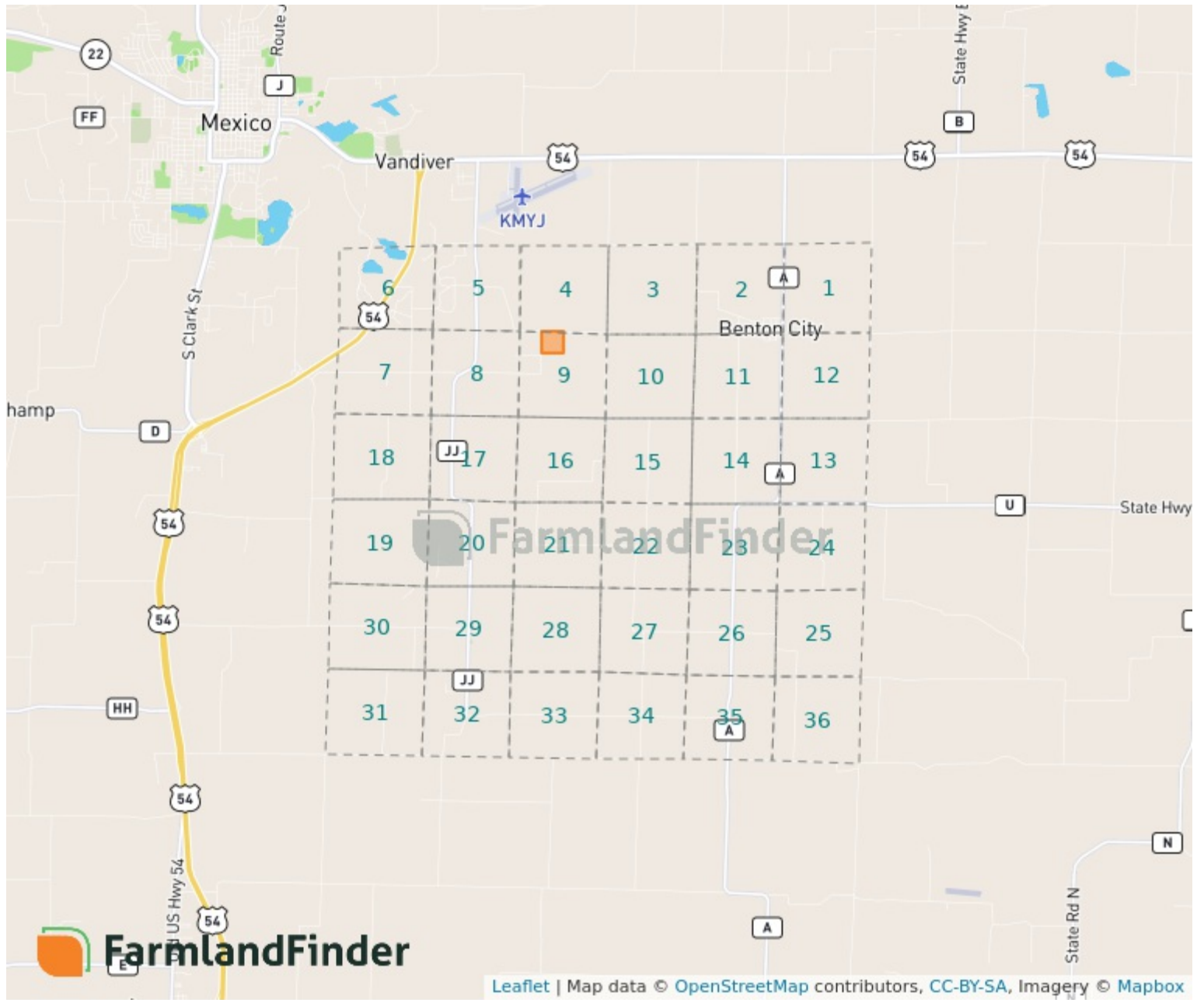
9 - 50N - 8W  
Audrain County, Missouri  
39°7'55.85" N, 91°48'47.21" W

## Topography Map

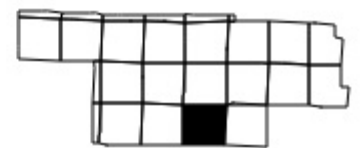


**9 - 50N - 8W**  
**Audrain County, Missouri**  
**39°7'55.85" N, 91°48'47.21" W**

# Plat Map

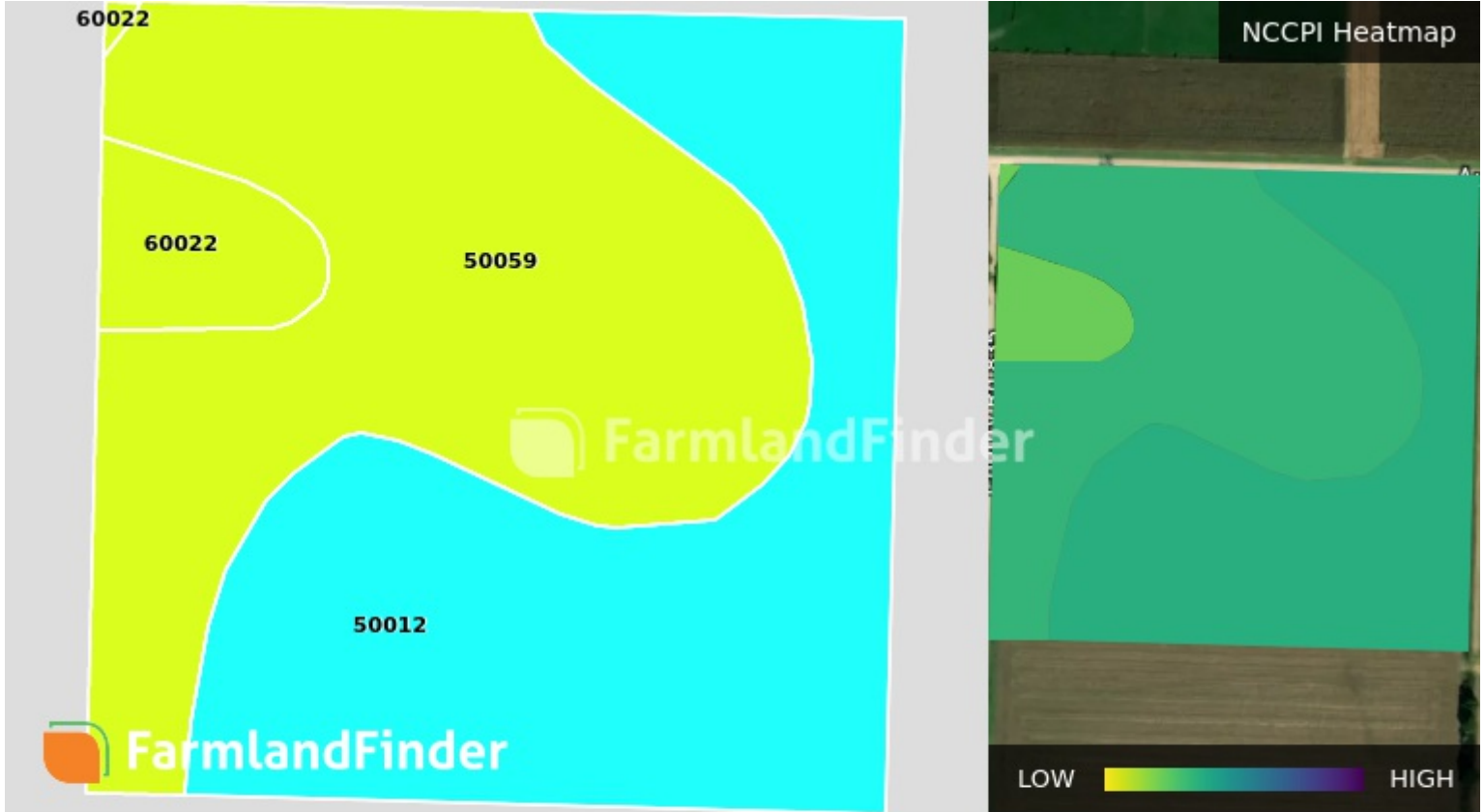


9 - 50N - 8W  
Audrain County, Missouri  
39°7'55.85" N, 91°48'47.21" W



# Soil Map – Total Acres

Source: NRCS SSURGO



Code	Description	Acres	% of Field	Soil Class	NCCPI
50059	Mexico silt loam, 1 to 4% slopes	19.53	47.8%	3	48.53
50012	Putnam silt loam, 0 to 1% slopes	19.05	46.6%	3	50.78
60022	Leonard silt loam, 1 to 6% slopes	2.27	5.5%	3	41.14
		<b>40.85</b>			<b>49.12</b>