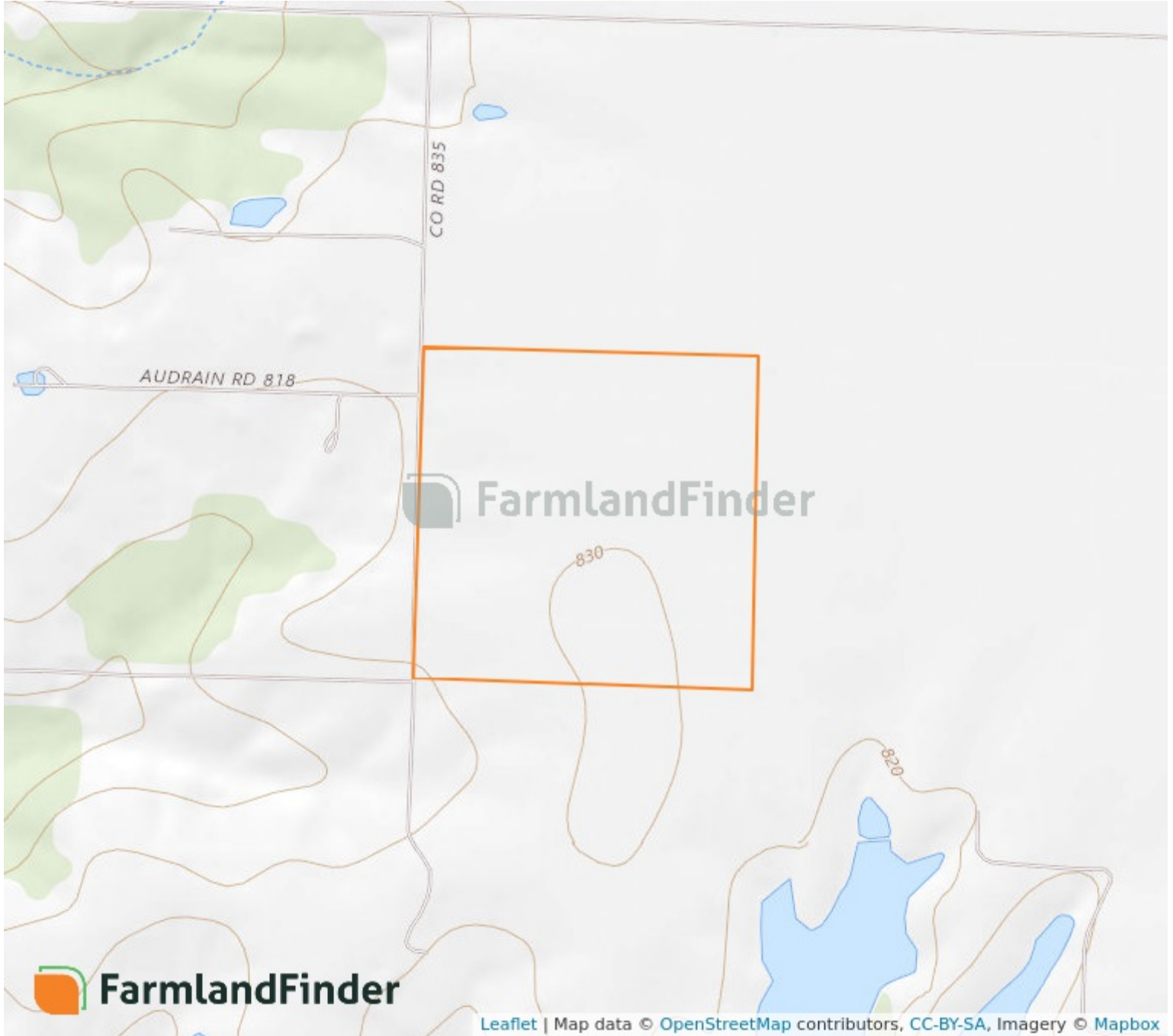


Aerial Map



9 - 50N - 8W
Audrain County, Missouri
39°7'42.73" N, 91°48'47.75" W

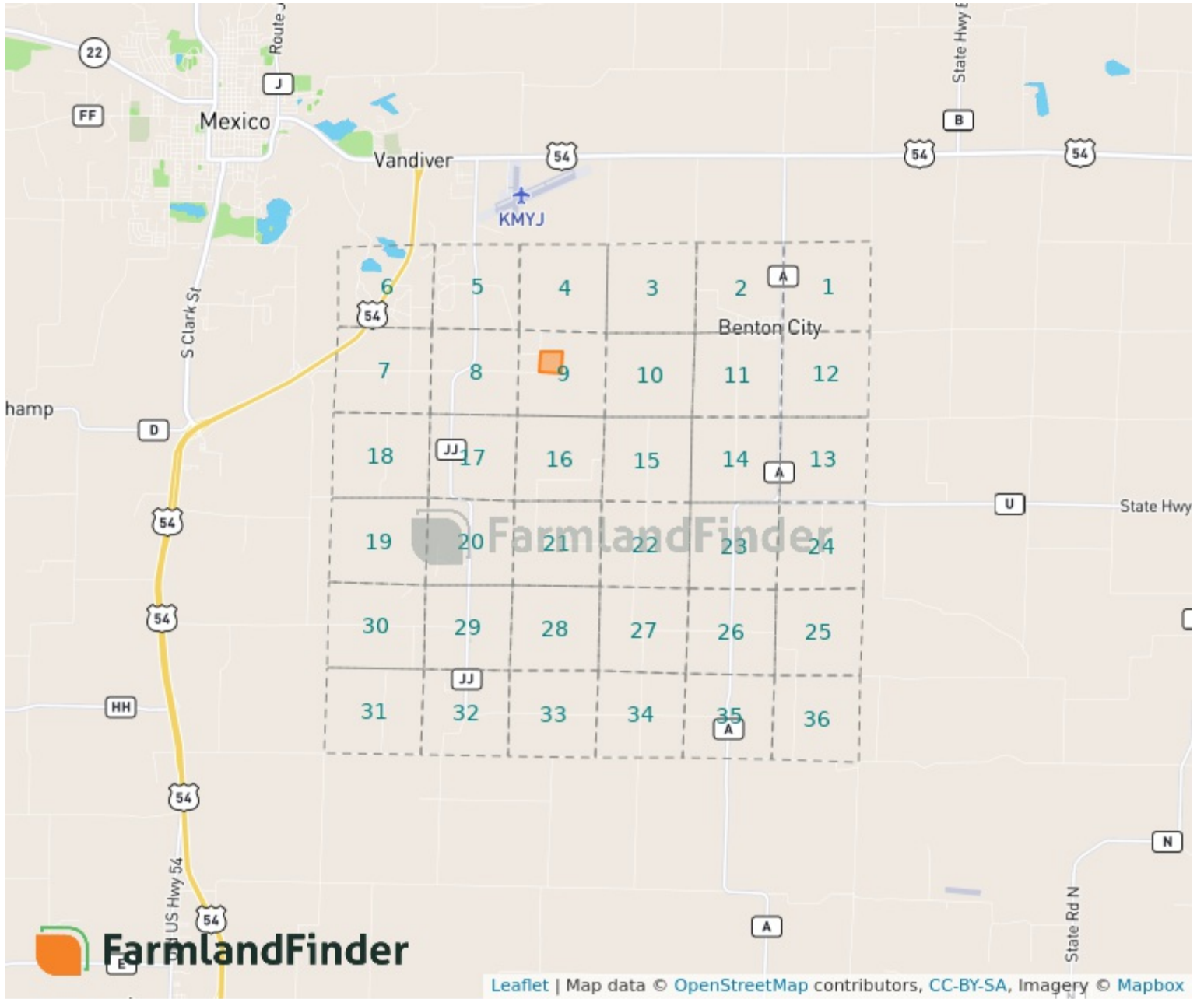
Topography Map



9 - 50N - 8W
Audrain County, Missouri

39°7'42.73" N, 91°48'47.75" W

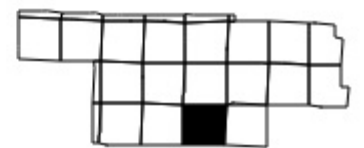
Plat Map



9 - 50N - 8W

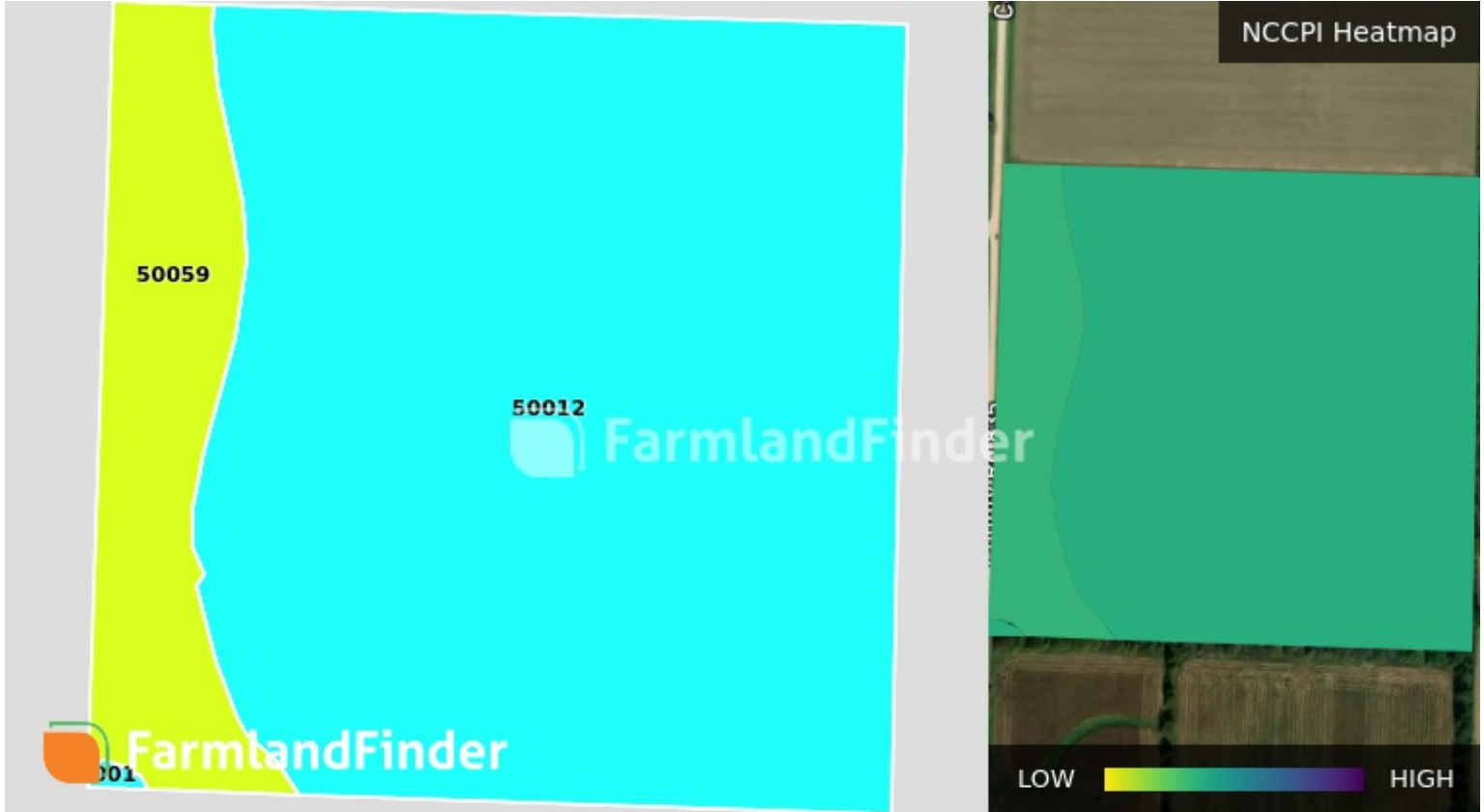
Audrain County, Missouri

39°7'42.73" N, 91°48'47.75" W



Soil Map – Total Acres

Source: NRCS SSURGO



Code	Description	Acres	% of Field	Soil Class	NCCPI
50012	Putnam silt loam, 0 to 1% slopes	34.55	84.5%	3	50.78
50059	Mexico silt loam, 1 to 4% slopes	6.26	15.3%	3	48.53
50001	Armstrong loam, 5 to 9% slopes	0.08	0.2%	3	51.09
		40.9			50.44